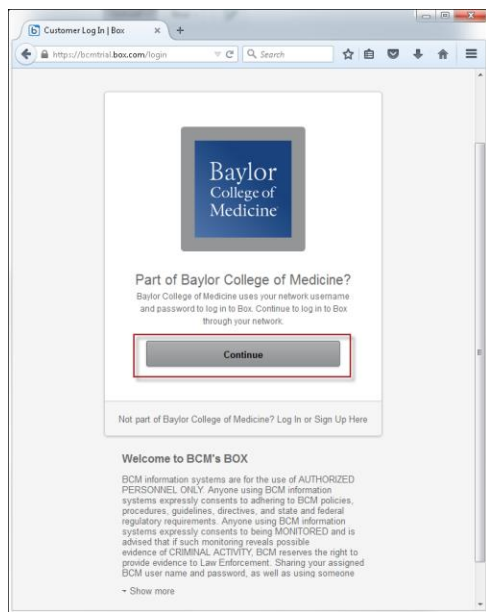


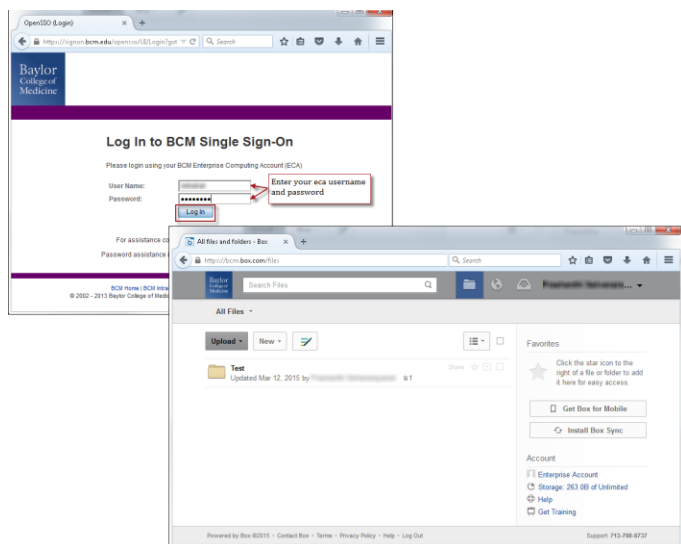
File Sharing – Getting Started with Box at BCM

Getting started with Box at BCM is simple and easy. Create folders, upload files to your Box at BCM account and collaborate with your colleagues.

1. Go to <https://bcm.box.com>. The Welcome screen displays.
2. Click **Continue**.



3. The BCM Single Sign On page will display. Enter your enterprise computing account (eca) within the **User Name** and **Password**.
4. Click **Log In**. The Box at BCM Welcome page displays the list of saved folders.



Quick Reference Guide

- Version: 15-0605-01
- OIT Help Desk: 713-798-8737