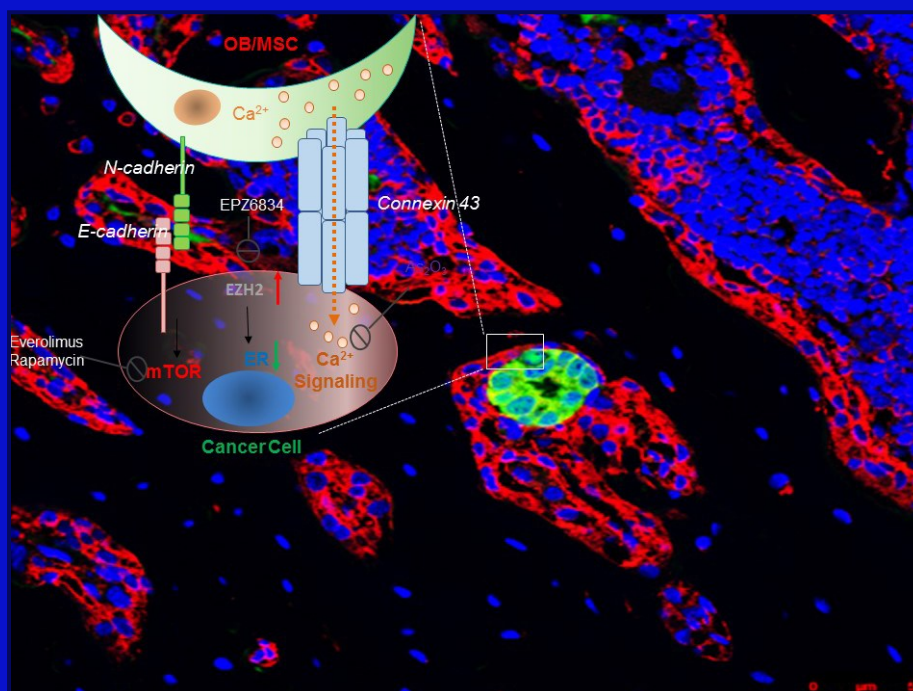


New Insights into early-stage bone colonization of disseminated tumor cells



TUESDAY

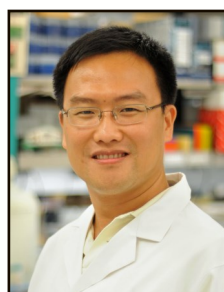
JULY 31, 2018

4:00 P.M. - 5:00 P.M.

ROOM 201A



Scan to Calendar



SHAWN XIANG ZHANG, PH.D.

Associate Professor,
Lester and Sue Smith Breast Center
Department of Molecular & Cellular Biology

Baylor College of Medicine®

Host: Jin Wang, Ph.D.
wangj@bcm.edu